

THE CAPI CONNECTION

Elise Bigley | Editor

Welcome to the CAPI Connection

Welcome to the first edition of the CAPI Connection. The CAPI Connection is our monthly newsletter that will connect you with the work we are doing at the Canadian Agri-Food Policy Institute (CAPI) and the broader community driving agriculture policy.

Every month the newsletter will highlight what is new with CAPI, including the work we are doing to drive Canadian agri-food policy forward. This month's recent activities include a What We Heard report following a virtual Dialogue on green growth, the final Growing Stronger report (a partnership with the Arrell Food Institute), and the recording of our recent webinar on the value-added sector and the potential for ESG investing...

Full commentary continues on page 3

What We're Reading

The Final Report of the Independent Review on the Economics of Biodiversity presents the first comprehensive economic framework of its kind for biodiversity and calls for urgent and transformative change in how we think, act and measure economic success to protect and enhance our prosperity and the natural world. Grounded in a deep understanding of ecosystem processes and how they are affected by economic activity, this new framework sets out how we should account for Nature in economics and decision-making. Professor Dasgupta argues "nature is a blind spot in economics that we ignore at our peril" and proposes how we should ensure it is included.

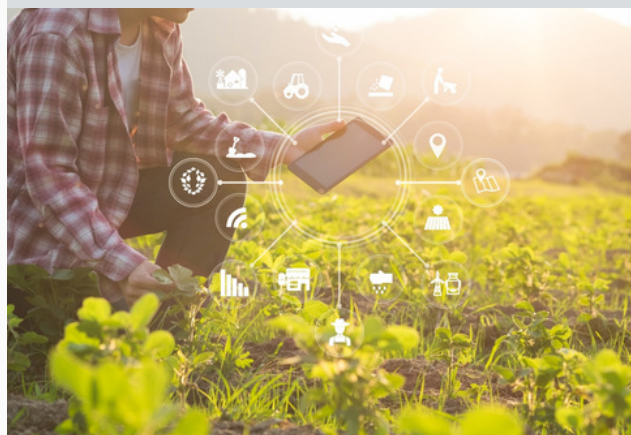


Upcoming Events

More and Better with Less: Sustainable Intensification in Agriculture

Webinar Series | March 2nd + 5th
[Register here for this exciting webinar series!](#)

Trade and Climate Change
Virtual Conference | April 7th + 9th
[Visit the conference website and register today!](#)



What's New at CAPI

**Green Growth Technologies for a
More Resilient Agri-Food System**
What We Heard Report

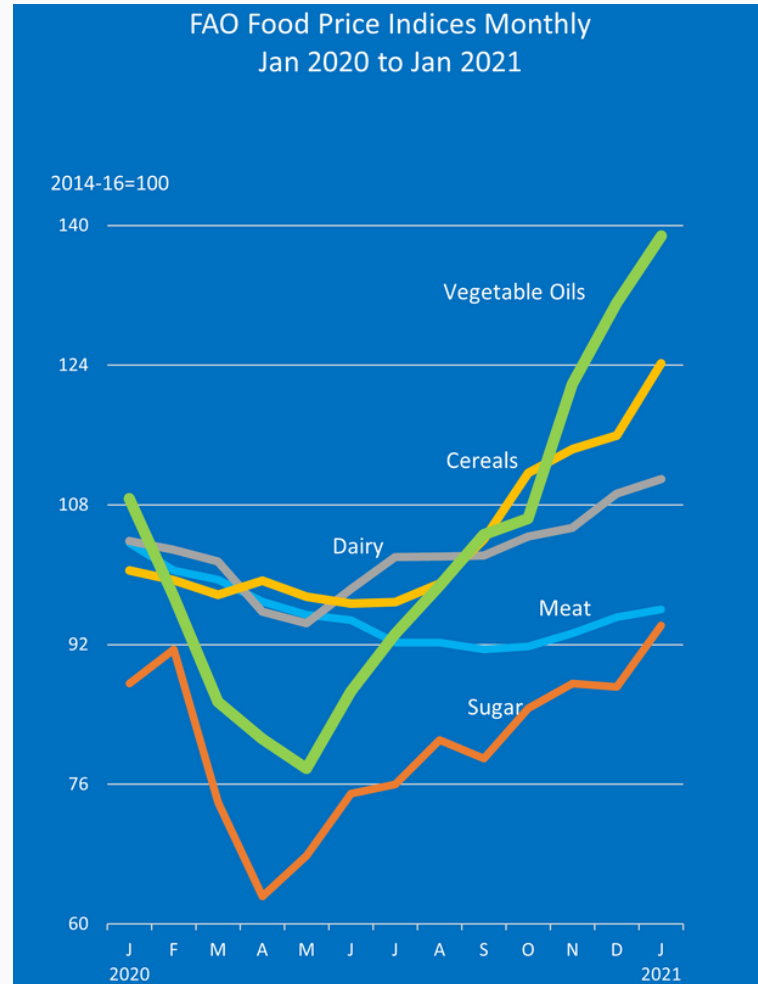
**Conclusions from Agri-Food
Community Consultations on the
COVID-19 Pandemic**
Growing Stronger Project Final
Report

**The New Frontier: Investing,
Sustainability and Value-Added**
Webinar Recording

One Great Graphic

The latest FAO Food Price Index for January 2021, reflecting monthly changes in a global basket of major commodities, has been heading upwards since July 2020 as a result of higher cereal and oilseed prices. It was 11% higher in January compared to a year ago. Cereal and oilseed prices are now 24% and 28% higher respectively since increasing rapidly since last July. Meat prices have been more stable, having fallen 7% compared to a year ago in January but now moving upwards and are expected to continue to rise with higher feed prices and stronger global demand for protein in the post pandemic recovery period.

Longer term we need to be thinking about the impact of higher food prices on global food security. Food price increases reflect supply and demand gaps. Land usable for agriculture is limited at about one third of the planet's land area. There is a rising need to conserve biodiversity and only so much of the remaining natural area can be sustainably converted to cropland. Future population growth and rising income will require sustainable intensification of agriculture to produce more and better with less, to ensure we can continue to feed the world, without destroying it.



Source: www.fao.org.

Support CAPI

You can make a difference... Consider becoming a partner or supporter of our work through the Canadian Agri-Food Foundation, a registered charity. Your commitment is vital as it is urgent to intensify our efforts as agriculture and agri-food can be essential solution providers for the economy, environment, health, food and global security but creative policy changes are essential. To get involved please email Jenel Bode, Director of Fundraising, bodej@capi-icpa.ca

CAPI acknowledges the overall support of its many partners particularly Agriculture and Agri-Food Canada.

CAPI Webinars Sponsor Spotlight



**PROTEIN
INDUSTRIES
CANADA**

Canada



Welcome to the CAPI Connection

continued from page 1

Welcome to the first edition of the CAPI Connection. The CAPI Connection is our monthly newsletter that will connect you with the work we are doing at the Canadian Agri-Food Policy Institute (CAPI) and the broader community driving agriculture policy.

Every month the newsletter will highlight what is new with CAPI, including the work we are doing to drive Canadian agri-food policy forward. This month's recent activities include a What We Heard report following a virtual Dialogue on green growth, the final Growing Stronger report (a partnership with the Arrell Food Institute), and the recording of our recent webinar on the value-added sector and the potential for ESG investing.

It is also our opportunity to highlight upcoming events. In early March, we will host a two-webinar series on sustainable intensification. Titled More and Better with Less, the webinar series will focus on the science and the business of producing more food but doing it more sustainably, with fewer inputs.

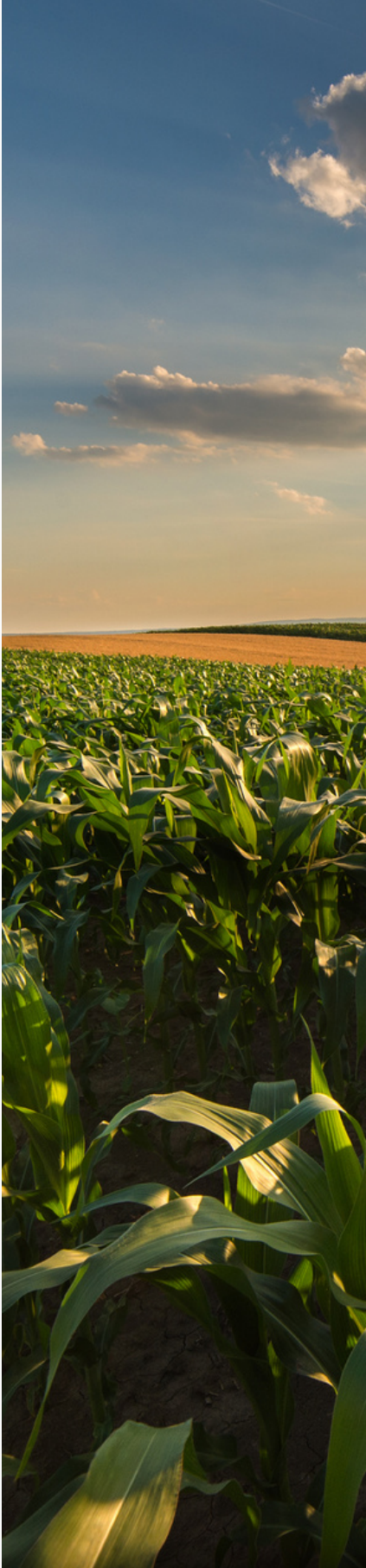
We are also excited to share early details of a virtual conference we will be hosting with the US-based Farm Foundation this April. The conference will focus on the intersection of trade and climate change and what it means for agriculture. With a new US Administration and an increasing price on carbon in Canada, trade and climate policy will have a growing impact on the agri-food system in North America.

The newsletter is also an opportunity for the CAPI team to share information from other sources that we think are relevant to Canadian agri-food policy and may be missed. We hope that the information we share will help inform Canada's agri-food policy discussions.

The newsletter is one part of CAPI's ongoing efforts to improve our outreach and engagement. The need for engagement in agriculture policy has never been greater. The pressures on the sector from a changing climate, changing consumers and changing government policies are significant. However, the opportunities in front of the food system, from producer to consumer, are even greater.

CAPI has also been evolving how we approach agriculture and agri-food policy.

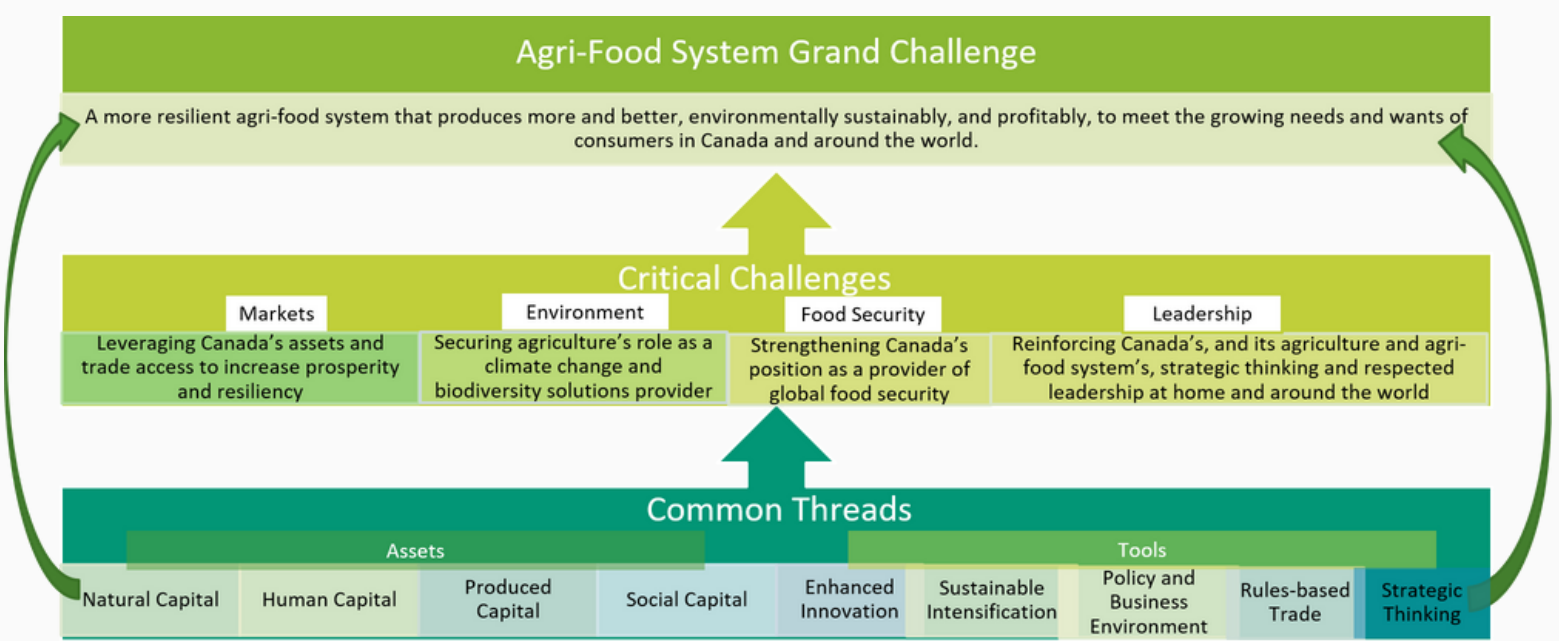
In 2019, CAPI identified two critical challenges that would define what a sustainable agri-food system looks like for future generations: a changing, multi-polar global context, and Canada's ability to successfully mitigate and adapt to climate change.





Since those challenges were adopted, COVID-19 hit the system with an almost unprecedented challenge. The pandemic put enormous pressure on many of the links in Canada's food chain. Fortunately, the links did not break. However, the ongoing pressures from the pandemic and the upcoming shift to post-pandemic recovery underscore the need for a more comprehensive and strategic approach to agri-food policy aimed at increasing resiliency, environmental sustainability, value, and growth.

Therefore, rather than two critical challenges, CAPI's new framework starts with a longer-term grand challenge for the agri-food system underpinned by shorter-term critical challenges under the themes of environment, markets, and food security and leadership.



CAPI has identified the common threads that connect these challenges and are vital to turning them into opportunities. First, natural, human, produced, and social capital are the assets that the sector needs to deploy strategically. Second, these assets will need to be deployed through enhanced innovation, sustainable intensification, the policy and business environment, rules-based trade and enhanced strategic thinking.

While some may see only threats in these challenges, CAPI sees significant opportunities for the sector. Canada's agriculture and agri-food system prospects are great if the system can come together to maximize the potential for sustainable prosperity and long-term growth.

While the framework is evolving, CAPI's foundation is not. CAPI will continue to embrace its history of commissioning ground-breaking research, connecting people with ideas and with each other and driving the conversation.

CAPI is committed to doing more of this important work, but that will require your support. That is why the newsletter also highlights how you can support CAPI and the critical work it does. Please reach out to the CAPI team if you are interested in learning more about these opportunities.

Tyler McCann, Chief Engagement Officer